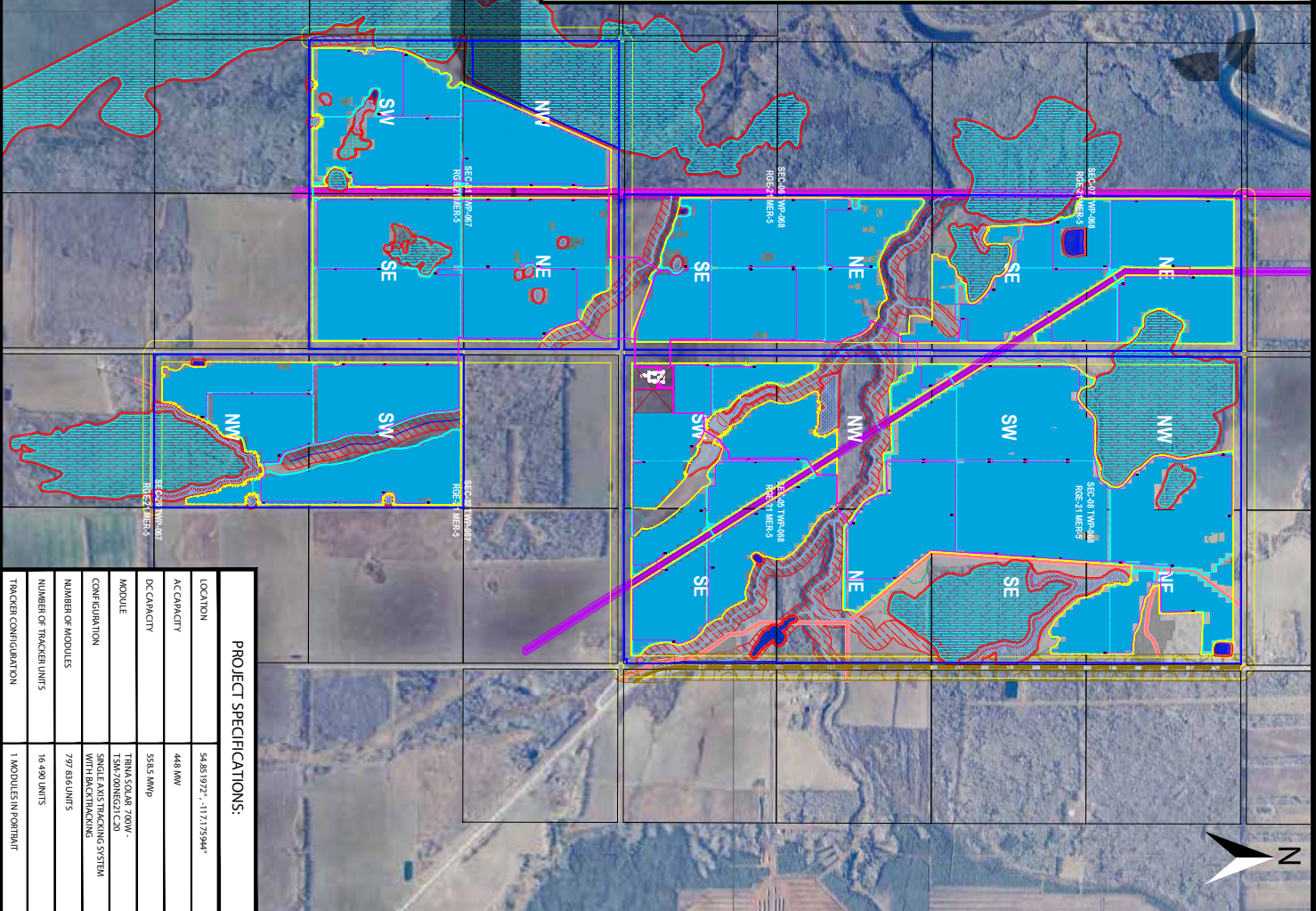
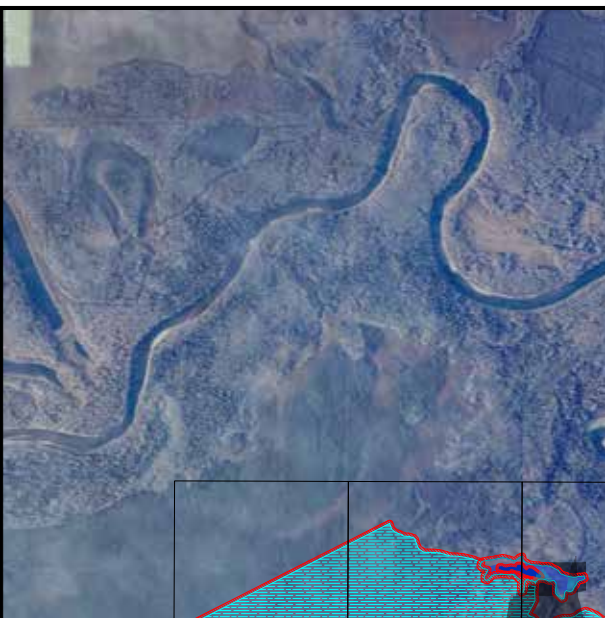
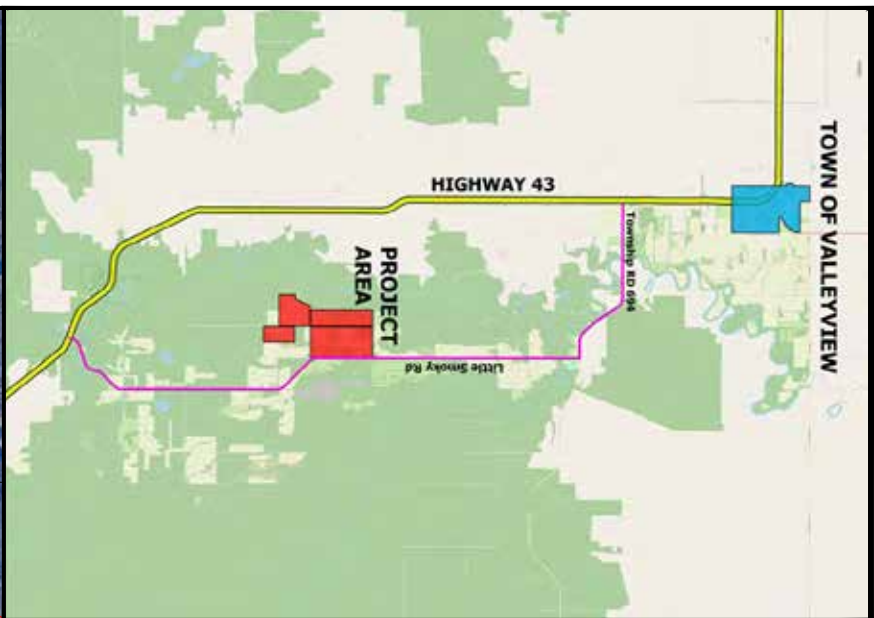


TOWN OF VALLEYVIEW



PROJECT SPECIFICATIONS:

LOCATION	54.861922° -117.175944°
AC CAPACITY	446 MW
DC CAPACITY	585.6 MWp
MODULE	TRINA SOLAR 700W - 150W/700EG1 C20
CONFIGURATION	SINGLE AXIS TRACKING SYSTEM WITH BACKTRACKING
NUMBER OF MODULES	797,886 UNITS
NUMBER OF TRACKER UNITS	16,490 UNITS
TRACKER CONFIGURATION	1 MODULES IN PORTAIT

LEGEND:

	PROJECT AREA
	FENCE
	INTERNAL ROAD
	SUBSTATION
	TRANSFORMER
	COLLECTOR LINE
	PV TRACKER UNITS
	TEMPERARY MARCH - CLASS II WET
	WOODED CONSPICUOUS FEN WOODED SWAMPS & SEBRACK (15M)
	SEASONAL MARSH SWAMP - CLASS III & SEBRACK (15M)
	SEMI-PERMANENT MARSH - CLASS IV WET & SEBRACK (15M)
	PERMANENT OPEN WATER - CLASS V WET & SEBRACK (15M)
	DIAGNOSTIC & SEBRACK (15M)
	WATERCOURSES & STREAMS (4M)
	LOW PRESSURE PRELINE & SEBRACK (10M)
	ROAD ALLOWANCE & SEBRACK (4M)
	HIGHWAY CENTER LINE & SEBRACK (10M)
	HOUSING - RESIDENCE AREAS
	16M TOWERLINE & ROW (15M SETBACK)
	2.8M TOWERLINE & ROW (25M SETBACK)
	ALBERTA TOWNSHIP SYSTEM

NOTES:

WETLANDS:
 CLASS I WETLANDS ARE NOT ADDED.
 WETLANDS ARE ADDED WITH THE EXCEPTION OF WETLANDS CLASS III, IV & V WETLANDS HAVE A 15M SETBACK.
 A PROPERTY LINE SETBACK OF 15M WAS APPLIED.



PROJECT:	Little Smoky 1 Solar Project
DRAWING:	PV PLANT LAYOUT
DESIGNED BY:	COSTA, J.
CHECKED:	ED, L.
APPROVED:	ED, L.
SCALE:	1:33500
SHEET:	1 of 1
ISSUED:	2025-04-23
REVISION:	04